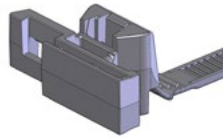


Avery Dennison's T-Slot Connector Ties offer a solution for securing electrical connectors where inner vehicle wire routing is challenging. T-Slot Ties are designed to fasten easily and securely to prevent rattling and loosening of parts. Our T-Slot connector ties fit a wide range of connectors from Delphi, JST, FCI, Tyco, Molex, and Yazaki. To see if your connector is compatible with one of our part numbers use these reference charts.

**20113-0**  
**7.5"ADGT CONNECTOR TIE BLACK HEAT STABLE**

Mount Size: FCI Connector  
Bundle Diameter: 0.06 - 1.75" (1.6 - 44.5 mm)  
Operating Temperature: -40 to 125°C / -40 to 257°F  
Resin: PA66 IMHS  
Min. Loop Tensile Strength: 50 lbf. (222 N)

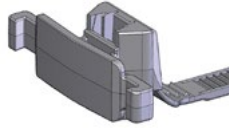


Mfgr.	Connector Family	Part Number	Color	Index/ Key Type	# Ways
Delphi	GT 150 Sealed	13662835	Gray	106	6
Delphi	GT 150 Sealed	13546698	Natural	102	2
Delphi	GT 150 Sealed	13533785	Black	102	2
Delphi	GT 150 Sealed	13519053	Black	105	5
Delphi	GT 150 Sealed	13519049	Black	103	3
Delphi	GT 150 Sealed	13510099	Black	102	2
Delphi	GT 150 Sealed	15487755	Black	104	4
Delphi	GT 150 Sealed	15485648	Black	104	4
Delphi	GT 150 Sealed	15397579	Black	106	6
Delphi	GT 150 Sealed	15326840	Black	108	8
Delphi	GT 150 Sealed	15326847	Black	110	10
Delphi	GT 150 Sealed	15326854	Black	112	12
Delphi	GT 150 Sealed	15326861	Black	114	14
Delphi	GT 150 Sealed	15326868	Black	116	16
Delphi	GT 280	13518847	Black	102	2
Delphi	GT 280	13521457	Black	103	3
Delphi	GT 280	13521461	Black	104	4
Delphi	GT 280	13521465	Black	105	5
Delphi	GT 280	13521469	Black	106	6
Delphi	GT 280	15326655	Black	108	8
Delphi	GT 280	15326661	Black	110	10
Delphi	GT 280	15326915	Black	112	12
Delphi	GT 280	15326922	Black	114	14
Delphi	GT 280	15326667	Black	116	16
Delphi	Metri-Pack 150	12162000	Black		2
Delphi	Metri-Pack 150	12129615	Black		3
Delphi	Metri-Pack 150	12162102	Black		4
Delphi	Metri-Pack 150	12103974	Natural		5
Delphi	Metri-Pack 150	12124107	Black		6
Delphi	Metri-Pack 150	12047931	Black		8
Delphi	Metri-Pack 150	12045808	Black		140
Delphi	Metri-Pack 280	15336641	Black		4
Delphi	Metri-Pack 280	12129600	Dark		4
Delphi	Metri-Pack 280	12186400	Gray	101	5
Delphi	Metri-Pack 280	12186614	Black	102	5
Delphi	Metri-Pack 280	12186579	Gray	103	5
Delphi	Metri-Pack 280	12110753	Black	101	7
Delphi	Metri-Pack 280	12146840	Cream	102	7

Mfgr.	Connector Family	Part Number	Color	Index/ Key Type	# Ways
Delphi	Metri-Pack 280	12129614	Gray	101	7
Delphi	Metri-Pack 280	12161187	Black		15
Delphi	Metri-Pack 630	15358681	Black		3
Delphi	Metri-Pack	12092055	Black	102	7
Delphi	GT 150 Splice Saver	12191216	Light	105	12
Delphi	GT 150 Splice Saver	12176460	Black	104	12
Delphi	GT 150 Splice Saver	12176460	Black	103	12
Delphi	GT 150 Splice Saver	12176459	Black	102	12
Delphi	GT 150 Splice Saver	12176458	Black	101	12
Delphi	Metri-Pack 280 Unsealed	12191932	Black	104	12
Delphi	Metri-Pack 280 Unsealed	12191928	Black	103	12
Delphi	Metri-Pack 280 Unsealed	12176474	Black	102	12
Delphi	Metri-Pack 280 Unsealed	12176473	Black	101	12
Delphi	Metri-Pack 280 Unsealed	15305291	Black	104	12
Delphi	Metri-Pack 280 Unsealed	15305288	Black	103	12
Delphi	Metri-Pack 280 Unsealed	15305297	Black	102	12
Delphi	Metri-Pack 280 Unsealed	15305294	Black	101	12
Delphi	GT 150 Sealed	12191910	Black		6
Delphi	GT 150 Sealed	12191900	Black	102	12
Delphi	GT 150 Sealed	12191905	Black	101	12
JST	SNA	SNAMB-02UN-	Natural		2
JST	SNA	SNAMB-02UN-	Black		2
JST	SNA	SNAMB-05UN-	Natural		5
JST	HIC	08HIC-P-A1	Yellow		8
JST	HIC	08HIC-P-1B	Yellow		8
JST	HIC	08HIC-P-2A	Yellow		8
JST	HIC	08HIC-P-2B	Yellow		8
JST	AIT-II	AIT2WSB-02A-	Black		2
JST	AIT-II	AIT2WSB-03A-	Black		3
JST	AIT-II	AIT2WSB-	Black		6
JST	AIT-II	AIT2WSB-	Natural		6
JST	AIT-II	AIT2WSB-	Natural		7
JST	AIT-II	AIT2WSB-10A-	Black		10
JST	AIT-II	AIT2WSB-10A-	Gray		10
JST	SAC	SACWSB-04-K	Black		4

**20111-0**  
**ADAPEX CONNECTOR TIE BLACK**

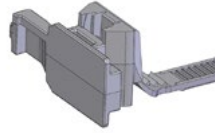
Mount Size: FCI Connector  
Bundle Diameter: 0.06 - 1.75" (1.6 - 44.5 mm)  
Operating Temperature: -40 to 125°C / -40 to 257°F  
Resin: PA66 IMHS  
Min. Loop Tensile Strength: 35 lbf. (156 N)



Mfg.	Connector Family	Part Number	Color	Index/ Key Type	# Ways
FCI	APEX 150 Hybrid	54241000	Black	A	10
FCI	APEX 150 Hybrid	54241001	Grey	B	10
FCI	APEX 150 Hybrid	54241002	Brown	C	10
FCI	APEX 150 Hybrid	54241003	Green	D	10
FCI	APEX 150 Hybrid	54241008	Black	A	10
FCI	APEX 150 Hybrid	54241009	Grey	B	10
FCI	APEX 150 Hybrid	54241012	Black	A	10
FCI	APEX 150 Hybrid	54241013	Grey	B	10
FCI	APEX 150 Hybrid	54251400	Black	A	14
FCI	APEX 150 Hybrid	54251401	Grey	B	14
FCI	APEX 150 Hybrid	54251402	Brown	C	14
FCI	APEX 150 Hybrid	54251403	Green	D	14
FCI	APEX 150 Hybrid	54251412	Black	A	14
FCI	APEX 150 Hybrid	54251413	Grey	B	14
FCI	APEX 150 Hybrid	54251416	Black	A	14
FCI	APEX 150 Hybrid	54251417	Grey	B	14
FCI	APEX 150 Hybrid	54251420	Black	A	14
FCI	APEX 150 Hybrid	54251421	Grey	B	14
FCI	APEX 150 Hybrid	54251424	Black	A	14
FCI	APEX 150 Hybrid	54251425	Grey	B	14
FCI	APEX 150 Hybrid	54251428	Black	A	14
FCI	APEX 150 Hybrid	54251429	Grey	B	14
FCI	APEX 150 Hybrid	54241600	Black	A	16
FCI	APEX 150 Hybrid	54241601	Grey	B	16
FCI	APEX 150 Hybrid	54241602	Brown	C	16
FCI	APEX 150 Hybrid	54241603	Green	D	16
FCI	APEX 150 Hybrid	54241608	Black	A	16
FCI	APEX 150 Hybrid	54241609	Grey	B	16
FCI	APEX 150 Hybrid	54241612	Black	A	16
FCI	APEX 150 Hybrid	54241613	Grey	B	16
FCI	APEX 150 Hybrid	54241616	Black	A	16
FCI	APEX 150 Hybrid	54241617	Grey	B	16
FCI	APEX 150 Hybrid	54241620	Black	A	16
FCI	APEX 150 Hybrid	54241621	Grey	B	16
FCI	Apex 2.8mm Connection	55200200	Dark Green	A	2
FCI	Apex 2.8mm Connection	54200273	Dark Green	A	2
FCI	Apex 2.8mm Connection	54200260	Dark Blue	B	2
FCI	Apex 2.8mm Connection	54200274	Dark Blue	B	2
FCI	Apex 2.8mm Connection	54200261	Dark Brown	C	2
FCI	Apex 2.8mm Connection	54200275	Dark Brown	C	2
FCI	Apex 2.8mm Connection	54200262	Natural	D	2
FCI	Apex 2.8mm Connection	54200276	Natural	D	2
FCI	Apex 2.8mm Connection	54200206	Black	A	2
FCI	Apex 2.8mm Connection	54200210	Black	A	2
FCI	Apex 2.8mm Connection	54200213	Black	A	2
FCI	Apex 2.8mm Connection	54200215	Black	A	2
FCI	Apex 2.8mm Connection	54200200	Black	A	2
FCI	Apex 2.8mm Connection	54200204	Black	A	2
FCI	Apex 2.8mm Connection	54200207	Light Grey	B	2
FCI	Apex 2.8mm Connection	54200211	Light Grey	B	2
FCI	Apex 2.8mm Connection	54200201	Light Grey	B	2
FCI	Apex 2.8mm Connection	54200205	Light Grey	B	2
FCI	Apex 2.8mm Connection	54200208	Dark Grey	C	2
FCI	Apex 2.8mm Connection	55200204	Dark Grey	C	2
FCI	Apex 2.8mm Connection	54200209	Natural	D	2
FCI	Apex 2.8mm Connection	55200205	Natural	D	2
FCI	Apex 2.8mm Connection	54200200	Black		2
FCI	Apex 2.8mm Connection	54200201	Light Grey		2
FCI	Apex 2.8mm Connection	54200202	Dark Grey		2
FCI	Apex 2.8mm Connection	54200203	Natural		2
FCI	Apex 2.8mm Connection	54200304	Black		3
FCI	Apex 2.8mm Connection	54200305	Light Grey		3
FCI	Apex 2.8mm Connection	54200306	Dark Grey		3
FCI	Apex 2.8mm Connection	54200307	Natural		3
FCI	Apex 2.8mm Connection	54200405	Black		4
FCI	Apex 2.8mm Connection	54200406	Light Grey		4
FCI	Apex 2.8mm Connection	54200407	Dark Grey		4
FCI	Apex 2.8mm Connection	54200408	Natural		4
FCI	Apex 2.8mm Connection	54200604	Black		6
FCI	Apex 2.8mm Connection	54200605	Light Grey		6
FCI	Apex 2.8mm Connection	54200606	Dark Grey		6
FCI	Apex 2.8mm Connection	54200607	Natural		6
FCI	Apex 2.8mm Connection	54201000	Black		10
FCI	Apex 2.8mm Connection	54201001	Light Grey		10
FCI	Apex 2.8mm Connection	54201002	Light Green		10
FCI	Apex 2.8mm Connection	54201003	Dark Green		10
FCI	Apex 2.8mm Connection	54201004	Orange		10
FCI	Apex 2.8mm Connection	54201005	Aqua		10
FCI	Apex 2.8mm Connection	54201006	Black		10
FCI	Apex 2.8mm Connection	54201007	Light Grey		10
FCI	Apex 2.8mm Connection	54201008	Light Green		10
FCI	Apex 2.8mm Connection	54201400	Black		14
FCI	Apex 2.8mm Connection	54201401	Light Grey		14
FCI	Apex 2.8mm Connection	54201402	Dark Grey		14
FCI	Apex 2.8mm Connection	54201403	Natural		14
FCI	Apex 2.8mm Connection	54201404	Black		14
FCI	Apex 2.8mm Connection	54201405	Light Grey		14

**20124-0**  
CT CONNECTOR TIE ADFM, BLACK HEAT STABLE

Mount Size: Yazaki Connector  
 Bundle Diameter: 0.06 - 1.75" (1.6 - 44.5 mm)  
 Operating Temperature: -40 to 125°C / -40 to 257°F  
 Resin: PA66 IMHS  
 Min. Loop Tensile Strength: 50 lbf. (222 N)

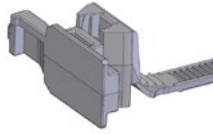


Mfrgr.	Connector Family	Part Number	Color	Index/ Key Type	# Ways	Mfrgr.	Connector Family	Part Number	Color	Index/ Key Type	# Ways
Molex	3.33mm/6.00mm NSCC Hybrid	982761001	Black		16	Molex	3.50mm MX150 Sealed Connectors	33472-0908	Brown	C	8
Molex	3.33mm/6.00mm NSCC Hybrid	982761002	Green		16	Molex	3.50mm MX150 Sealed Connectors	33472-0909	Green	D	8
Molex	3.33mm/6.00mm NSCC Hybrid	982761003	Blue		16	Molex	3.50mm MX150 Sealed Connectors	33472-0910	Black	A	8
Molex	3.33mm/6.00mm NSCC Hybrid	982761004	White		16	Molex	3.50mm MX150 Sealed Connectors	33472-0920	Black	A	8
Molex	3.33mm/6.00mm NSCC Hybrid	982761005	Brown		16	Molex	3.50mm MX150 Sealed Connectors	33472-1301	Black	A	12
Molex	3.33mm/6.00mm NSCC Hybrid	982761006	Grey		16	Molex	3.50mm MX150 Sealed Connectors	33472-1302	Light Gray	B	12
Molex	MX150 Sealed Connectors	33481-0301	Black	A	3	Molex	3.50mm MX150 Sealed Connectors	33472-1303	Brown	C	12
Molex	MX150 Sealed Connectors	33481-0302	Gray	B	3	Molex	3.50mm MX150 Sealed Connectors	33472-1304	Green	D	12
Molex	MX150 Sealed Connectors	33481-0401	Gray	A	4	Molex	3.50mm MX150 Sealed Connectors	33472-1306	Black	A	12
Molex	MX150 Sealed Connectors	33481-0402	Black	B	4	Molex	3.50mm MX150 Sealed Connectors	33472-1307	Light Gray	B	12
Molex	MX150 Sealed Connectors	33481-0601	Black	A	6	Molex	3.50mm MX150 Sealed Connectors	33472-1308	Brown	C	12
Molex	MX150 Sealed Connectors	334810602	Gray	B	6	Molex	3.50mm MX150 Sealed Connectors	33472-1309	Green	D	12
Molex	MX150 Hybrid Sealed Connectors	33486-1601	Black	A	16	Molex	3.50mm MX150 Sealed Connectors	33472-1311	Black	A	12
Molex	MX150 Hybrid Sealed Connectors	33486-1602	Gray	B	16	Molex	3.50mm MX150 Sealed Connectors	33472-1312	Light Gray	B	12
Molex	3.50mm MX150 Sealed Connectors	33482-0401	Black	A	4	Molex	3.50mm MX150 Sealed Connectors	33472-1313	Brown	C	12
Molex	3.50mm MX150 Sealed Connectors	33482-0402	Gray	B	4	Molex	3.50mm MX150 Sealed Connectors	33472-1314	Green	D	12
Molex	3.50mm MX150 Sealed Connectors	33482-0601	Black	A	6	Molex	3.50mm MX150 Sealed Connectors	33472-1316	Black	A	12
Molex	3.50mm MX150 Sealed Connectors	33482-0602	Gray	B	6	Molex	3.50mm MX150 Sealed Connectors	33472-1317	Light Gray	B	12
Molex	3.50mm MX150 Sealed Connectors	33482-0801	Black	A	8	Molex	3.50mm MX150 Sealed Connectors	33472-1318	Brown	C	12
Molex	3.50mm MX150 Sealed Connectors	33482-0802	Gray	B	8	Molex	3.50mm MX150 Sealed Connectors	33472-1319	Green	D	12
Molex	3.50mm MX150 Sealed Connectors	33482-1201	Black	A	12	Molex	3.50mm MX150 Sealed Connectors	33472-1321	Black	A	12
Molex	3.50mm MX150 Sealed Connectors	33482-1202	Gray	B	12	Molex	3.50mm MX150 Sealed Connectors	33472-1322	Black	A	12
Molex	3.50mm MX150 Sealed Connectors	33482-1601	Black	A	16	Molex	3.50mm MX150 Sealed Connectors	33472-1323	Black	A	12
Molex	3.50mm MX150 Sealed Connectors	33482-1602	Gray	B	16	Molex	3.50mm MX150 Sealed Connectors	33472-1324	Black	A	12
Molex	3.50mm MX150 Sealed Connectors	33482-2001	Black	A	20	Molex	3.50mm MX150 Sealed Connectors	33472-1325	Black	A	12
Molex	3.50mm MX150 Sealed Connectors	33482-2002	Gray	B	20	Molex	3.50mm MX150 Sealed Connectors	33472-1326	Light Gray	B	12
Molex	5.00mm MX150 Sealed Connectors	34675-0003	Black	C	2	Molex	3.50mm MX150 Sealed Connectors	33472-1327	Black	A	12
Molex	5.00mm MX150 Sealed Connectors	34675-0004	Gray	B	2	Molex	3.50mm MX150 Sealed Connectors	33472-1328	Light Gray	B	12
Molex	3.50mm MX150 Sealed Connectors	33472-0701	Black	A	6	Molex	3.50mm MX150 Sealed Connectors	33472-1329	Black	A	12
Molex	3.50mm MX150 Sealed Connectors	33472-0702	Gray	B	6	Molex	3.50mm MX150 Sealed Connectors	33472-1330	Black	A	12
Molex	3.50mm MX150 Sealed Connectors	33472-0705	Black	A	6	Molex	3.50mm MX150 Sealed Connectors	33472-1331	Black	A	12
Molex	3.50mm MX150 Sealed Connectors	33472-0706	Gray	B	6	Molex	3.50mm MX150 Sealed Connectors	33472-1332	Black	A	12
Molex	3.50mm MX150 Sealed Connectors	33472-0707	Brown	C	6	Molex	3.50mm MX150 Sealed Connectors	33472-1333	Black	A	12
Molex	3.50mm MX150 Sealed Connectors	33472-0709	Black	A	6	Molex	3.50mm MX150 Sealed Connectors	33472-1334	Black	A	12
Molex	3.50mm MX150 Sealed Connectors	33472-0710	Black	A	6	Molex	3.50mm MX150 Sealed Connectors	33472-1335	Black	A	12
Molex	3.50mm MX150 Sealed Connectors	33472-0711	Black	A	6	Molex	3.50mm MX150 Sealed Connectors	33472-1336	Black	A	12
Molex	3.50mm MX150 Sealed Connectors	33472-0712	Black	A	6	Molex	3.50mm MX150 Sealed Connectors	33472-1337	Black	A	12
Molex	3.50mm MX150 Sealed Connectors	33472-0901	Black	A	8	Molex	3.50mm MX150 Sealed Connectors	33472-1338	Black	A	12
Molex	3.50mm MX150 Sealed Connectors	33472-0902	Gray	B	8	Molex	3.50mm MX150 Sealed Connectors	33472-1339	Black	A	12
Molex	3.50mm MX150 Sealed Connectors	33472-0903	Brown	C	8	Molex	3.50mm MX150 Sealed Connectors	33472-1340	Black	A	12
Molex	3.50mm MX150 Sealed Connectors	33472-0904	Green	D	8	Molex	3.50mm MX150 Sealed Connectors	33472-1341	Black	A	12
Molex	3.50mm MX150 Sealed Connectors	33472-0905	Black	D	8	Molex	3.50mm MX150 Sealed Connectors	33472-1342	Black	A	12
Molex	3.50mm MX150 Sealed Connectors	33472-0906	Black	A	8	Molex	3.50mm MX150 Sealed Connectors	33472-1343	Black	A	12
Molex	3.50mm MX150 Sealed Connectors	33472-0907	Light Gray	B	8	Molex	3.50mm MX150 Sealed Connectors	33472-1344	Black	A	12

COMPATIBLE CONNECTORS FOR 20124-0 CONTINUE ON NEXT PAGE

**20124-0**  
CT CONNECTOR TIE ADFM, BLACK HEAT STABLE

Mount Size: Yazaki Connector  
Bundle Diameter: 0.06 - 1.75" (1.6 - 44.5 mm)  
Operating Temperature: -40 to 125°C / -40 to 257°F  
Resin: PA66 IMHS  
Min. Loop Tensile Strength: 50 lbf. (222 N)

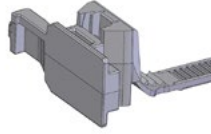


Mfgr.	Connector Family	Part Number	Color	Index/ Key Type	# Ways	Mfgr.	Connector Family	Part Number	Color	Index/ Key Type	# Ways
Molex	3.50mm MX150 Sealed Connectors	33472-1345	Black	A	12	Yazaki	YES/YESC Kaizen Connectors	7282-8870-40	Light Gray		8
Molex	3.50mm MX150 Sealed Connectors	33472-1346	Black	A	12	Yazaki	YES/YESC Kaizen Connectors	7282-8871	Natural		8
Molex	3.50mm MX150 Sealed Connectors	33472-1347	Black	A	12	Yazaki	YES/YESC Kaizen Connectors	7282-9022-30	Black		10
Molex	3.50mm MX150 Sealed Connectors	33472-1348	Black	A	12	Yazaki	YES/YESC Kaizen Connectors	7282-7696-40	Light Gray		12
Molex	5.00mm MX150 Sealed Connectors	34062-0011	Black	A	2	Yazaki	YES/YESC Kaizen Connectors	7282-9072-80	Brown		16
Molex	5.00mm MX150 Sealed Connectors	34062-0012	Gray	B	2	Yazaki	YES/YESC Kaizen Connectors	7282-6568-40	Light Gray		20
Molex	5.00mm MX150 Sealed Connectors	34062-0013	Black	C	2	Yazaki	YES/YESC Kaizen Connectors	7282-5530-40	Light Gray		2
Molex	5.00mm MX150 Sealed Connectors	34062-0014	Black	D	2	Yazaki	YES/YESC Kaizen Connectors	7282-5530-50	Orange		2
Molex	5.00mm MX150 Sealed Connectors	34062-0015	Black	A	2	Yazaki	YES/YESC Kaizen Connectors	7282-5680-60	Green		2
Molex	5.00mm MX150 Sealed Connectors	34062-0016	Gray	B	2	Yazaki	YES/YESC Kaizen Connectors	7282-5530-70	Yellow		2
Molex	5.00mm MX150 Sealed Connectors	34062-0017	Black	C	2	Yazaki	YES/YESC Kaizen Connectors	7282-5555-40	Light Gray		2
Molex	5.00mm MX150 Sealed Connectors	34062-0018	Black	D	2	Yazaki	YES/YESC Kaizen Connectors	7282-6443-40	Light Gray		2
Molex	5.00mm MX150 Sealed Connectors	34062-0019	Gray	D	2	Yazaki	YES/YESC Kaizen Connectors	7282-6443-50	Orange		2
Molex	5.00mm MX150 Sealed Connectors	34062-0020	Gray	D	2	Yazaki	YES/YESC Kaizen Connectors	7282-6444-60	Green		2
Molex	5.00mm MX150 Sealed Connectors	34062-0031	Black	A	2	Yazaki	YES/YESC Kaizen Connectors	7282-6444-70	Yellow		2
Molex	5.00mm MX150 Sealed Connectors	34062-0032	Light Gray	B	2	Yazaki	YES/YESC Kaizen Connectors	7282-5539-40	Light Gray		3
Molex	5.00mm MX150 Sealed Connectors	34062-0033	Black	C	2	Yazaki	YES/YESC Kaizen Connectors	7282-3440-40	Light Gray		3
Molex	5.00mm MX150 Sealed Connectors	34062-0034	Black	D	2	Yazaki	YES/YESC Kaizen Connectors	7282-5531-40	Light Gray		4
Molex	5.00mm MX150 Sealed Connectors	34062-0035	Light Gray	D	2	Yazaki	YES/YESC Kaizen Connectors	7282-5531-70	Yellow		4
Molex	5.00mm MX150 Sealed Connectors	34062-0036	Black	A	2	Yazaki	YES/YESC Kaizen Connectors	7282-5531-50	Orange		4
Molex	5.00mm MX150 Sealed Connectors	34062-0037	Light Gray	B	2	Yazaki	YES/YESC Kaizen Connectors	7282-5688-60	Green		4
Molex	5.00mm MX150 Sealed Connectors	34062-0038	Black	C	2	Yazaki	YES/YESC Kaizen Connectors	7282-6474-60	Green		4
Molex	5.00mm MX150 Sealed Connectors	34062-0039	Black	D	2	Yazaki	YES/YESC Kaizen Connectors	7282-6449-40	Light Gray		4
Molex	5.00mm MX150 Sealed Connectors	34062-0040	Light Gray	D	2	Yazaki	YES/YESC Kaizen Connectors	7282-3443-60	Green		4
Molex	5.00mm MX150 Sealed Connectors	34675-0003	Black	C	2	Yazaki	YES/YESC Kaizen Connectors	7282-5532-40	Light Gray		6
Molex	5.00mm MX150 Sealed Connectors	34675-0004	Gray	B	2	Yazaki	YES/YESC Kaizen Connectors	7282-5944-40	Light Gray		6
Molex	2.8 Sys waterproof 1-Way Housing	98016-0011	Black		1	Yazaki	YES/YESC Kaizen Connectors	7282-6454-40	Light Gray		6
Molex	2.8 Sys waterproof 1-Way Housing	98016-0012	Brown		1	Yazaki	YES/YESC Kaizen Connectors	7282-5538-40	Light Gray		8
Molex	2.8 Sys waterproof 1-Way Housing	98016-0013	Blue		1	Yazaki	YES/YESC Kaizen Connectors	7282-3441-40	Light Gray		8
Molex	2.8 Sys waterproof 1-Way Housing	98016-0014	Green		1	Yazaki	YES/YESC Kaizen Connectors	7282-5333-40	Light Gray		10
Molex	2.8 Sys waterproof 1-Way Housing	98016-0015	Yellow		1	Yazaki	YES/YESC Kaizen Connectors	7282-5533-70	Yellow		10
Molex	2.8 Sys waterproof 1-Way Housing	98016-0016	Gray		1	Yazaki	YES/YESC Kaizen Connectors	7282-5683-60	Green		10
Molex	2.8 Sys waterproof 1-Way Housing	98016-0017	Orange		1	Yazaki	YES/YESC Kaizen Connectors	7282-8499-40	Light Gray		10
Molex	2.8 Sys waterproof 1-Way Housing	98016-0018	Natural		1	Yazaki	YES/YESC Kaizen Connectors	7282-6455-40	Light Gray		10
Molex	2.8 Sys non-waterproof 1-Way	98017-0011	Black		1	Yazaki	YES/YESC Kaizen Connectors	7282-5540-40	Light Gray		12
Molex	2.8 Sys non-waterproof 1-Way	98017-0012	Brown		1	Yazaki	YES/YESC Kaizen Connectors	7282-3442-40	Light Gray		12
Molex	2.8 Sys non-waterproof 1-Way	98017-0013	Blue		1	Yazaki	YES/YESC Kaizen Connectors	7282-5534-60	Green		16
Molex	2.8 Sys non-waterproof 1-Way	98017-0014	Green		1	Yazaki	YES/YESC Kaizen Connectors	7282-5535-90	Blue		16
Molex	2.8 Sys non-waterproof 1-Way	98017-0015	Yellow		1	Yazaki	YES/YESC Kaizen Connectors	7282-5536-40	Light Gray		16
Molex	2.8 Sys non-waterproof 1-Way	98017-0016	Gray		1	Yazaki	YES/YESC Kaizen Connectors	7282-5690-60	Green		16
Molex	2.8 Sys non-waterproof 1-Way	98017-0017	Orange		1	Yazaki	YES/YESC Kaizen Connectors	7282-6453-60	Green		16
Molex	2.8 Sys non-waterproof 1-Way	98017-0018	Natural		1	Yazaki	YES/YESC Kaizen Connectors	7282-6456-90	Blue		16
Yazaki	YES/YESC Kaizen Connectors	7282-6560-	Light Gray		4	Yazaki	YES/YESC Kaizen Connectors	7282-5548-30	Black		2
Yazaki	YES/YESC Kaizen Connectors	7282-6561-	Light Gray		6	Yazaki	YES/YESC Kaizen Connectors	7282-5558-10	Dark Gray		2

COMPATIBLE CONNECTORS FOR 20124-0 CONTINUE ON NEXT PAGE

**20124-0**  
CT CONNECTOR TIE ADFM, BLACK HEAT STABLE

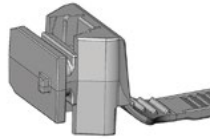
Mount Size: Yazaki Connector  
Bundle Diameter: 0.06 - 1.75" (1.6 - 44.5 mm)  
Operating Temperature: -40 to 125°C / -40 to 257°F  
Resin: PA66 IMHS  
Min. Loop Tensile Strength: 50 lbf. (222 N)



Mfgr.	Connector Family	Part Number	Color	Index/ Key Type	# Ways	Mfgr.	Connector Family	Part Number	Color	Index/ Key Type	# Ways
Yazaki	YES/YESC Kaizen Connectors	7282-5541-30	Black		3	Yazaki	YES/YESC Kaizen Connectors	7282-5575-10	Dark Gray		2
Yazaki	YES/YESC Kaizen Connectors	7282-5691-10	Dark Gray		3	Yazaki	YES/YESC Kaizen Connectors	7282-5576-10	Dark Gray		3
Yazaki	YES/YESC Kaizen Connectors	7282-5543-10	Dark Gray		4	Yazaki	YES/YESC Kaizen Connectors	7282-5570-10	Dark Gray		4
Yazaki	YES/YESC Kaizen Connectors	7282-5889-30	Black		4	Yazaki	YES/YESC Kaizen Connectors	7282-5571-30	Black		4
Yazaki	YES/YESC Kaizen Connectors	7282-5889-90	Blue		4	Yazaki	YES/YESC Kaizen Connectors	7282-5577-10	Dark Gray		6
Yazaki	YES/YESC Kaizen Connectors	7282-5553-10	Dark Gray		6	Yazaki	YES/YESC Kaizen Connectors	7282-5574-10	Dark Gray		8
Yazaki	YES/YESC Kaizen Connectors	7282-5553-30	Black		6	Yazaki	YES/YESC Kaizen Connectors	7282-5590-40	Light Gray		2
Yazaki	YES/YESC Kaizen Connectors	7282-5684-10	Dark Gray		8	Yazaki	YES/YESC Kaizen Connectors	7282-6458-40	Light Gray		2
Yazaki	YES/YESC Kaizen Connectors	7282-5684-30	Black		8	Yazaki	YES/YESC Kaizen Connectors	7282-5594-40	Light Gray		4
Yazaki	YES/YESC Kaizen Connectors	7282-5946-30	Black		10	Yazaki	YES/YESC Kaizen Connectors	7282-6469-40	Light Gray		4
Yazaki	YES/YESC Kaizen Connectors	7282-5545-10	Dark Gray		12	Yazaki	YES/YESC Kaizen Connectors	7282-5604-40	Light Gray		6
Yazaki	YES/YESC Kaizen Connectors	7282-5545-30	Black		12	Yazaki	YES/YESC Kaizen Connectors	7282-5596-10	Dark Gray		2
Yazaki	YES/YESC Kaizen Connectors	7282-6493-30	Black		18	Yazaki	YES/YESC Kaizen Connectors	7282-5595-10	Dark Gray		4
Yazaki	YES/YESC Kaizen Connectors	7282-5565-40	Light Gray		2	Yazaki	YES/YESC Kaizen Connectors	7282-3214-30	Black		2
Yazaki	YES/YESC Kaizen Connectors	7282-6445-40	Light Gray		2	Yazaki	YES/YESC Kaizen Connectors	7282-5628-40	Light Gray		3
Yazaki	YES/YESC Kaizen Connectors	7282-5563-40	Light Gray		3	Yazaki	YES/YESC Kaizen Connectors	7282-5620-40	Light Gray		8
Yazaki	YES/YESC Kaizen Connectors	7282-5561-40	Light Gray		4	Yazaki	YES/YESC Kaizen Connectors	7282-6448-40	Light Gray		8
Yazaki	YES/YESC Kaizen Connectors	7282-5566-60	Green		4	Yazaki	YES/YESC Kaizen Connectors	7282-5621-40	Light Gray		10
Yazaki	YES/YESC Kaizen Connectors	7282-6446-40	Light Gray		4	Yazaki	YES/YESC Kaizen Connectors	7282-5621	Natural		10
Yazaki	YES/YESC Kaizen Connectors	7282-5569-40	Light Gray		6	Yazaki	YES/YESC Kaizen Connectors	7282-6459-40	Light Gray		10
Yazaki	YES/YESC Kaizen Connectors	7282-6466-40	Light Gray		6	Yazaki	YES/YESC Kaizen Connectors	7282-5625-40	Light Gray		13
Yazaki	YES/YESC Kaizen Connectors	7282-5580-40	Light Gray		7	Yazaki	YES/YESC Kaizen Connectors	7282-6569-40	Light Gray		13
Yazaki	YES/YESC Kaizen Connectors	7282-5560-40	Light Gray		8	Yazaki	YES/YESC Kaizen Connectors	7282-5622-40	Light Gray		14
Yazaki	YES/YESC Kaizen Connectors	7282-3243-40	Light Gray		8	Yazaki	YES/YESC Kaizen Connectors	7282-5623-60	Green		14
Yazaki	YES/YESC Kaizen Connectors	7282-5564-40	Light Gray		10	Yazaki	YES/YESC Kaizen Connectors	7282-5623-30	Black		14
Yazaki	YES/YESC Kaizen Connectors	7282-6457-40	Light Gray		10	Yazaki	YES/YESC Kaizen Connectors	7282-5624-90	Blue		14
Yazaki	YES/YESC Kaizen Connectors	7282-5567-40	Light Gray		12	Yazaki	YES/YESC Kaizen Connectors	7282-5624-80	Brown		14
Yazaki	YES/YESC Kaizen Connectors	7282-5578-60	Green		12	Yazaki	YES/YESC Kaizen Connectors	7282-6447-40	Light Gray		14
Yazaki	YES/YESC Kaizen Connectors	7282-6467-40	Light Gray		12	Yazaki	YES/YESC Kaizen Connectors	7282-4190-30	Black		43
Yazaki	YES/YESC Kaizen Connectors	7282-6468-60	Green		12	Yazaki	YES/YESC Kaizen Connectors	7282-4192-40	Light Gray		43

**20101-0**  
T-SLOT CONNECTOR TIE BLACK

Mount Size: Tyco Connector  
Bundle Diameter: 0.06 - 1.75" (1.6 - 44.5 mm)  
Operating Temperature: -40 to 125°C / -40 to 257°F  
Resin: PA66 IMHS  
Min. Loop Tensile Strength: 50 lbf. (222 N)



Mfr.	Connector Family	Part Number	Color	Index/ Key Type	# Ways	Mfr.	Connector Family	Part Number	Color	Index/ Key Type	# Ways
Tyco	SSC	184244-1	Black	A-C4	4	Tyco	SSC	184307-1	Black	D-C4	4
Tyco	SSC	184246-1	Black	A-C4	4	Tyco	SSC	184307-2	Natural	D-C4	4
Tyco	SSC	184252-1	Black	B-C4	4	Tyco	SSC	184334-1	Natural	H-C4	4
Tyco	SSC	184254-1	Black	B-C4	4	Tyco	SSC	184334-2	Gray	H-C4	4
Tyco	SSC	184297-1	Black	C-C4	4	Tyco	SSC	184346-1	Black	A-C3	4
Tyco	SSC	184299-1	Black	D-C4	4	Tyco	SSC	184346-2	Natural	A-C3	4
Tyco	SSC	184305-1	Black	C-C4	4	Tyco	SSC	184355-1	Black	B-C3	4
Tyco	SSC	184305-2	Natural	C-C4	4	Tyco	SSC	184355-2	Gray	B-C3	4
						Tyco	SSC	184406-1	Black	E-C3	4

Avery Dennison has engineered a large portfolio of fasteners to help keep, wires, cables and components quiet and secure.

High quality polymers and ergonomic designs improve installation efficiencies and work in hard-to-reach places for a variety of automotive fastening applications.

Our fasteners meet many OEM specifications.

For more information visit [fastener.averydennison.com](http://fastener.averydennison.com), call or email us at [fastener@averydennison.com](mailto:fastener@averydennison.com) ✉

The information contained herein is believed to be reliable but Avery Dennison makes no representations concerning the accuracy or correctness of the data. This product, like any other should be tested by the customer/user thoroughly under end user conditions to ensure the product meets the particular requirements. Independent results may vary. Avery Dennison and the logo are registered trademarks of Avery Dennison Corp. Third party trademarks and/or trade names used herein are the property of their respective owner(s).

© 2019 Avery Dennison Corporation, All Rights Reserved.

**USA & CANADA**

224 Industrial Road  
Fitchburg, MA 01420  
Tel +978 345 8100 (direct)  
Tel +800 225 5913  
Fax +800 848 2169

**LATIN AMERICA**

Aristóteles #123  
Parque Industrial Kalos  
Apodaca, Nuevo León  
66600 México  
Tel +52 (81) 8864 4100  
Fax +52 (81) 8864 4101

**ASIA**

No. 7 Chun Ying Street  
Tseung Kwan O  
Industrial Estate  
New Territories, Hong Kong  
Tel +852 2372 3000  
Fax +852 2873 6436

**EUROPE, MIDDLE  
EAST & AFRICA**

1 Thomas Road  
Wooburn Green  
Bucks HP10 0PE  
Tel +(44) 1628 859500  
Fax +(44) 1628 859567

**SOUTH  
KOREA**

Gyeonggi-do

**JAPAN**

Tokyo